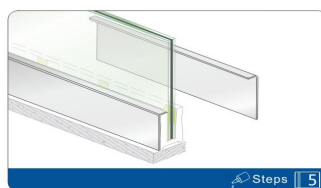
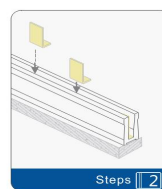
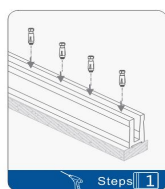
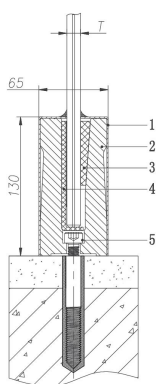




Base Shoe Railing

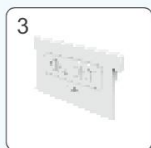
Railing Type	Module Size	Infill Panel	Customized Options
YM18	Depends on Glass Module	13.5mm/ 17.5mm Laminated Glass	Finish Shoe Cover Glass Top Cap



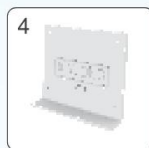
Cover Plate
(YM18-02)
Material: 304/316L
Surface Finish: Satin/Mirror
Length: L≤3000mm



U groove
(YM18-04)
Material: 6063-T6
Glass Thickness: 13.5/17.5mm
Length :L≤6000mm



Gasket
(YM18-03)
Material: ABS
Quantity:4 pcs/m



Gasket
(YM18-01)
Material: ABS
Quantity:4 pcs/m



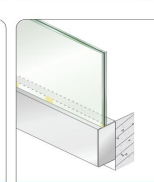
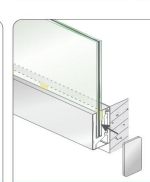
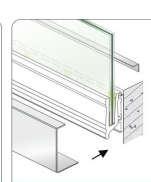
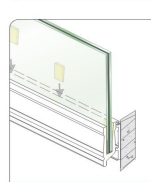
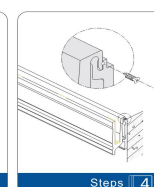
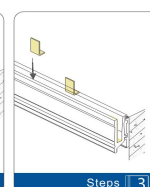
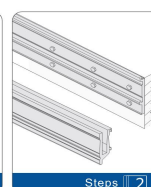
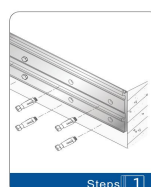
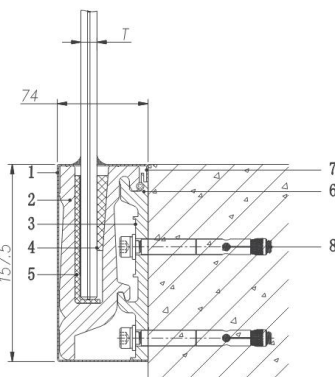
Cylinder Head Screw Nut Rod
(CAM-D-10N)
Material: 304+Q345B
Quantity: 4 pcs/m.



End cap
(YM18-07)
Material: 304/316L
Surface Finish: Satin/Mirror

Note: It doesn't contain chemical medicament, please consult anchor product department for chemical medicament (CAG-12)

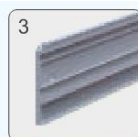
Railing Type	Module Size	Infill Panel	Customized Options
YM19	Depends on Glass Module	13.5mm/ 17.5mm Laminated Glass	Finish Shoe Cover Glass Top Cap



Front Decoration Panel
(YM19-03)
Material: 304/316L
Surface Finish: Satin/Mirror
Length: L≤3000mm



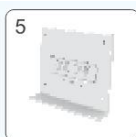
U-groove Accessories
(YM19-02)
Material: 6063-T6
Glass Thickness: 13.5/17.5mm
Length :L≤6000mm



U-groove Base Plate
(YM19-04)
Material: 6063-T6
Length :L≤6000mm



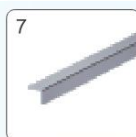
Shim
(YM18-03)
Material: ABS
Quantity:4 pcs/m



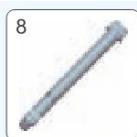
Shim
(YM18-03)
Material: ABS
Quantity:4 pcs/m



Self-tapping Screw
(GB/T 846 ST5.5)
Material: 304



Back Decorative Panel
(YM19-05)
Material: 304/316L
Surface Finish: Satin/Mirror
Length :L≤3000mm



Cylinder Head Screw Nut Rod
(SZP-Y-M10)
Material: Stainless Steel
Quantity: 8 pcs/m

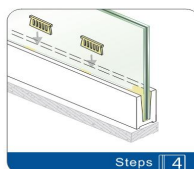
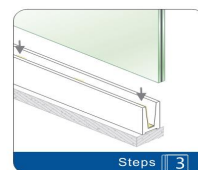
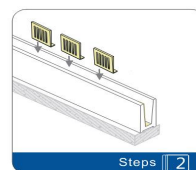
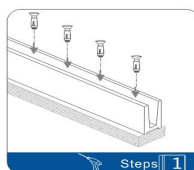
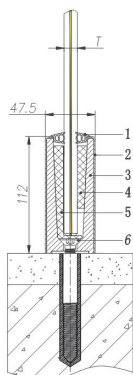


End cap
(YM19-07)
Material: Stainless Steel
Surface Finish: Satin/Mirror

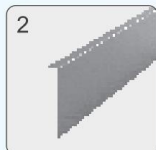


Base Shoe Railing

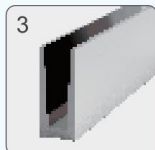
Railing Type	Module Size	Infill Panel	Customized Options
YM21A	Depends on Glass Module	13.5mm/ 17.5mm/21.5mm Laminated Glass	Finish Shoe Cover Glass Top Cap



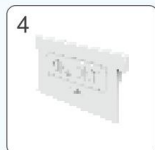
Gasket
(HJT01-1/-2/-3)
Material: EPDM



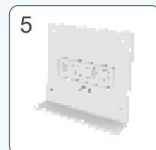
Cover Plate
(YM21A1-3A)
Material: 304/316L
Surface Finish: Satin/Mirror
Length: L≤3000mm



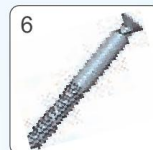
U-groove Accessories
(YM21A1-1)
Material: 6063-T6
Glass Thickness 13.5/17.5/21.5mm
Length: L≤6000mm



Shim
(YM21-2)
Material: ABS
Quantity: 4 pcs/m



Shim
(YM21-1)
Material: ABS
Quantity: 4 pcs/m

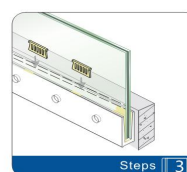
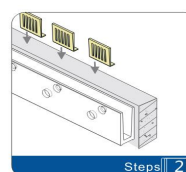
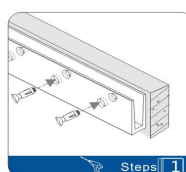
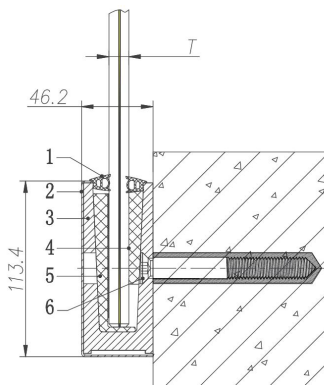


Countersunk Screw Nut Rod
(CAM-D-10C)
Material: 304+Q345B
Quantity: 4 pcs/m
Note: It doesn't contain chemical medicament, please consult anchor product department for chemical medicament (CAG-12)

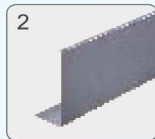


End cap
(YM21A1-4)
Material: 304/316L
Surface Finish: Satin/Mirror

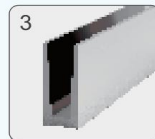
Railing Type	Module Size	Infill Panel	Customized Options
YM21B	Depends on Glass Module	13.5mm/ 17.5mm/21.5mm Laminated Glass	Finish Shoe Cover Glass Top Cap



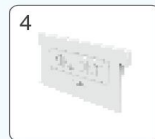
Gasket
(HJT01-1/-2/-3)
Material: EPDM



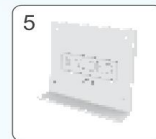
Cover Plate
(YM21B1-3A)
Material: 304/316L
Surface Finish: Satin/Mirror
Length: L≤3000mm



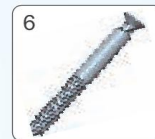
U-groove Accessories
(YM21B1-1)
Material: 6063-T6
Glass Thickness 13.5/17.5/21.5mm
Length: L≤6000mm



Shim
(YM21-2)
Material: ABS
Quantity: 4 pcs/m



Shim
(YM21-1)
Material: ABS
Quantity: 4 pcs/m



Countersunk Screw Nut Rod
(CAM-D-10C)
Material: 304+Q345B
Quantity: 4 pcs/m
Note: It doesn't contain chemical medicament, please consult anchor product department for chemical medicament (CAG-12)



End cap
(YM21A1-4)
Material: 304/316L
Surface Finish: Satin/Mirror



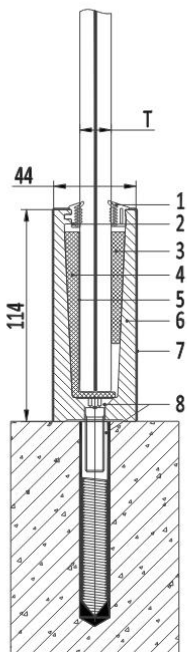
Other Base Shoe Railing Types Available (INS501, INS502, INS503, INS504)

INS501 Series

INS501-T12: T=12mm - 13.52mm

INS501-T16: T=16mm - 17.52mm

INS501-T20: T=20mm - 21.52mm



Load Capacity	Glass Height(mm)				
	1000	1100	1200	1300	1400
Wind Load (KPa)	4	3.2	2.8	2.4	2
Live Load (KN/m)	2	1.6	1.4	1.2	1

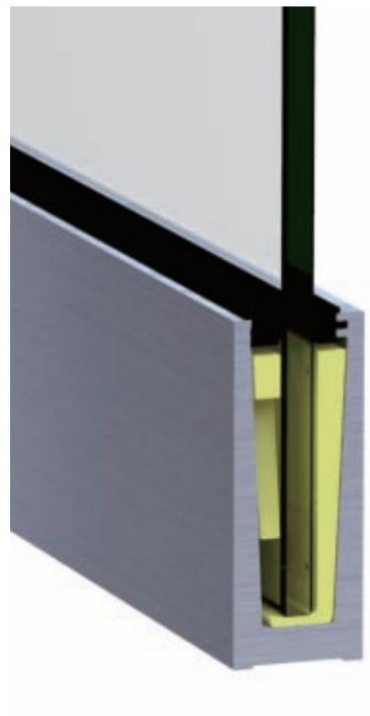
↑ The load capacity is for U groove system, not glass

↑ Structural calculation required for suitable solution

↑ Live load is assumed to apply on the top edge of glass

↑ The load capacity is for wind load or live load, not a combination

NO.	Name	Code	Qty	Material	Remarks
1	Gasket	INH203A	1	EPDM	
2	Gasket	INH203B	1	EPDM	
3	Shim	YM21-1*T	4 Pcs/m	ABS	T=13.52
4		YM21-2*T			T=17.52
5		YM21-3			T=21.52
6	U Groove	INS501-1	1	6063-T6	
7	Cover Plate	INP401	1	304	Optional
8	Anchor Bolt	CAM-D-10C	4 Pcs/m	304+Q235B	

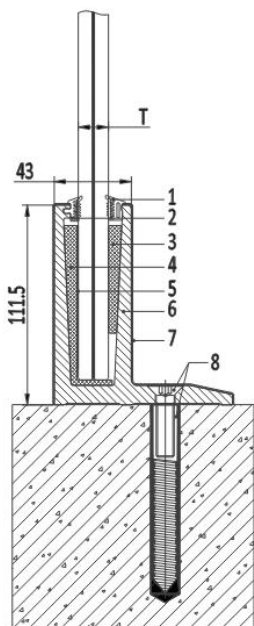


INS502 Series

INS502-T12: T=12mm - 13.52mm

INS502-T16: T=16mm - 17.52mm

INS502-T20: T=20mm - 21.52mm



Load Capacity	Glass Height(mm)				
	1000	1100	1200	1300	1400
Wind Load (KPa)	3	2.4	2	1.8	1.4
Live Load (KN/m)	1.5	1.2	1	0.9	0.7

↑ The load capacity is for U groove system, not glass

↑ Structural calculation required for suitable solution

↑ Live load is assumed to apply on the top edge of glass

↑ The load capacity is for wind load or live load, not a combination

NO.	Name	Code	Qty	Material	Remarks
1	Gasket	INH203A	1	EPDM	
2	Gasket	INH203B	1	EPDM	
3	Shim	YM21-1*T	4 Pcs/m	ABS	T=13.52
4		YM21-2*T			T=17.52
5		YM21-3			T=21.52
6	U Groove	INS502-1	1	6063-T6	
7	Cover Plate	INP402	1	304	Optional
8	Anchor Bolt	CAM-D-10C	4 Pcs/m	304+Q235B	





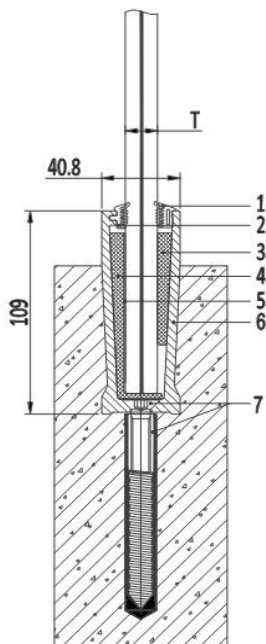
Other Base Shoe Railing Types Available (INS501, INS502, INS503, INS504)

INS503 Series

INS503-T12: T=12mm - 13.52mm

INS503-T16: T=16mm - 17.52mm

INS503-T20: T=20mm - 21.52mm



Load Capacity	Glass Height(mm)				
	1000	1100	1200	1300	1400
Wind Load (KPa)	0.8	0.64	0.56	0.64	0.4
Live Load(KN/m)	0.4	0.32	0.28	0.23	0.2

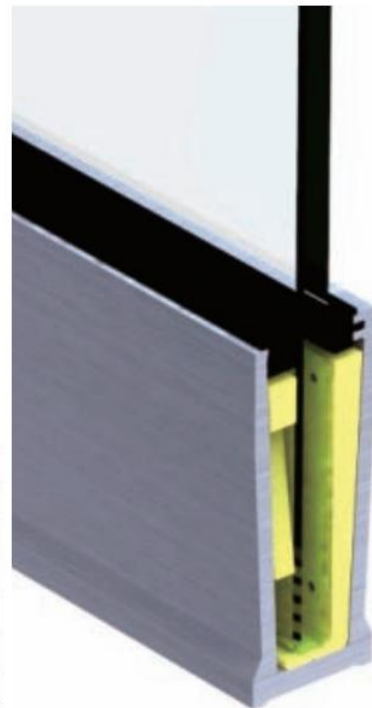
↑ The load capacity is for U groove system, not glass

↑ Structural calculation required for suitable solution

↑ Live load is assumed to apply on the top edge of glass

↑ The load capacity is for wind load or live load, not a combination

NO.	Name	Code	Qty	Material	Remarks
1	Gasket	INH203A	1	EPDM	
2	Gasket	INH203B	1	EPDM	
3	Shim	YM21-1*T	4 Pcs/m	ABS	T=13.52
4		YM21-2*T			T=17.52
5		YM21-3			T=21.52
6	U Groove	INS503-1	1	6063-T6	
7	Anchor Bolt	CAM-D-10C	4 Pcs/m	304+Q235B	

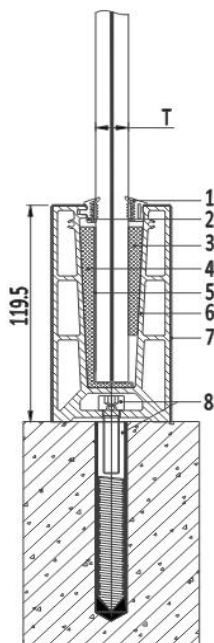


INS504 Series

INS504-T12: T=12mm - 13.52mm

INS504-T16: T=16mm - 17.52mm

INS504-T20: T=20mm - 21.52mm



Load Capacity	Glass Height(mm)				
	1000	1100	1200	1300	1400
Wind Load (KPa)	6	5	4	3.4	2.8
Live Load(KN/m)	3	2.5	2	1.7	1.4

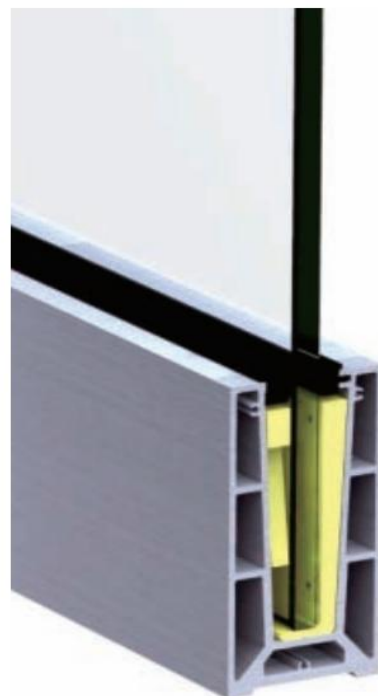
↑ The load capacity is for U groove system, not glass

↑ Structural calculation required for suitable solution

↑ Live load is assumed to apply on the top edge of glass

↑ The load capacity is for wind load or live load, not a combination

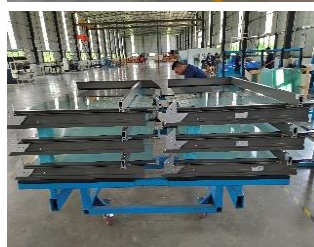
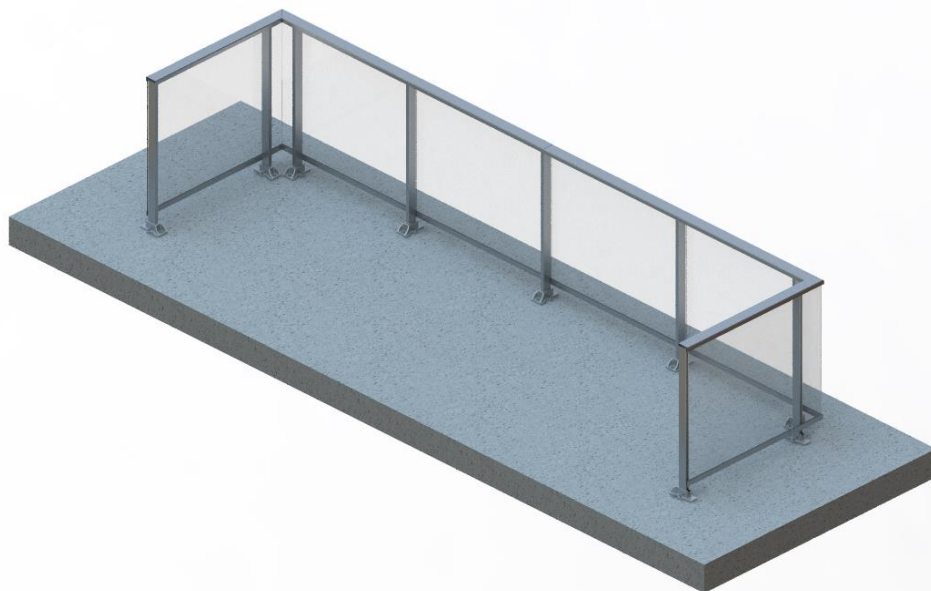
NO.	Name	Code	Qty	Material	Remarks
1	Gasket	INH203A	1	EPDM	
2	Gasket	INH203B	1	EPDM	
3	Shim	YM21-1*T	4 Pcs/m	ABS	T=13.52
4		YM21-2*T			T=17.52
5		YM21-3			T=21.52
6	U Groove	INS504-1	1	6063-T6	
7	Cover Plate	INP403	1	304	Optional
8	Anchor Bolt	CAM-D-10N	4 Pcs/m	304+Q235B	





Railings and Wind Screens

Railing Type	Module Size	Infill Panels Available	Customized Options
Top Mount (W/O Middle Rail)	1200mm*1100mm(Height), 1500mm*1100mm Tested	Glass, Aluminum Panels, etc.	Top Cap in Various Shapes. Various Finish Bird Frit, Tint Glass



Top Cap Available

Square



Round



Other customized shapes available

Finish Available

PVDF	PPG, Valspar, Akzo, AXALTA
Powder Coating	Akzo, Tiger
Anodize	Class 1/AA20 Black, Clear, Bronze

Standard Color Available

Gray RAL 9007	Black RAL 9017
White RAL 9010	Brown RAL 8011
Color match with RAL No. and PPG color chip is available	

Shoe Cover Available





Railings and Wind Screens

SECTION 10
TEST RESULTS

Direction of Load	Test		Specified loads (kN)	Deflection at Specified load (mm)	Safety Factor	Required Factored Load (kN)	Results
Outward	Horizontal load applied at the geometric center of the Glass-Infill infill over a 100 mm x 100 mm platen		0.5	11.99	2.50	1.25	Load Resisted
	Evenly Distributed Vertical Load Applied at the Top of the Guard (mid Span)/Quarter Point Equivalent load		1.5kN/m	2.64	1.67	2.51kN/m	Load Resisted
	Horizontal load applied at the minimum required height of the guard	Top Rail (mid Span)	1.0	15	2.00	2.00	Load Resisted
		Adjacent to Post	1.0	27	2.25	2.25	Load Resisted
		Top of Post	1.0	34	2.50	2.50	Load Resisted
	Ultimate concentrated Load Testing of Glass Infill.						
	Test		Load		Observation		
	Horizontal load applied at the geometric center of the Glass-Infill infill over a 100 mm x 100 mm platen.		Ultimate load Applied 5.58kN		Disengagement of glass infill from guard rail and failure of bottom rail to post connection. No glass breakage occurred.		



Tested in Intertek, meet OBC 2012 and NBC 2020
Registered patent in China
Testing facility available in factory



Railings and Wind Screens

Railing Types Available	Specification	Photos
TM-G	Typical top mount glass railing for balcony	
TM-G-M	Typical top mount glass railing with middle rail for balcony,	
TM-G-S	Typical top mount glass railing with aluminum panels for slab edge cover	
TM-P-1	Typical top mount picket railing for balcony	
TM-P-2	Typical top mount picket railing with middle rail for balcony,	



Railings and Wind Screens

Railing Types Available	Specification	Photos
TM-P-3	Heavy duty top mount picket railing	
TM-P-4	Heavy duty top mount picket railing with post caps	
TM-P-5	Heavy duty top mount picket railing with handrail, usually for ground level	
TM-P-6	Heavy duty top mount picket railing for stair	
TM-P-7	Heavy duty top mount picket railing with handrail for stair	

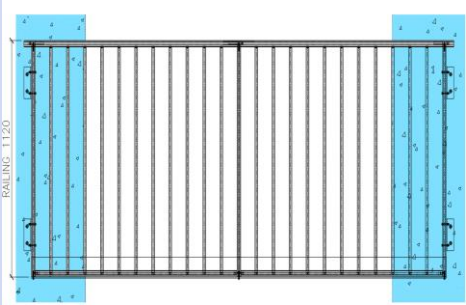
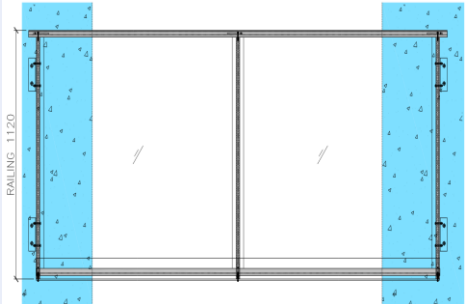





Railings and Wind Screens

Railing Types Available	Specification	Photos
WM-G	Typical wall mount glass railing, usually for roof	
WM-G-M	Typical wall mount glass railing with middle rail	
BP-G	Bypass railing with glass, high requirement on slab edge tolerance, frit required at slab area	
PS-G	Privacy screen for balcony, also can be used as wind screen, standard infill 5mm Morocco pinhead glass, other infills like etched glass, aluminum panels etc. are available	
TM-G-I	Top mount railing with wire	



Railings and Wind Screens

Railing Types Available	Specification	Photos
J-P	Picket railing used for Juliette balcony	
J-G	Glass railing used for Juliette balcony	
TM-G-U/WM-G-U/BP-G-U	Similar railing system with stronger posts which can be used for higher load situation or railing height at 1.5m	
RS-G	Base shoe glass railing	
More in Development	Bring up your requirements	



Railings and Wind Screens



Top Mount Railing



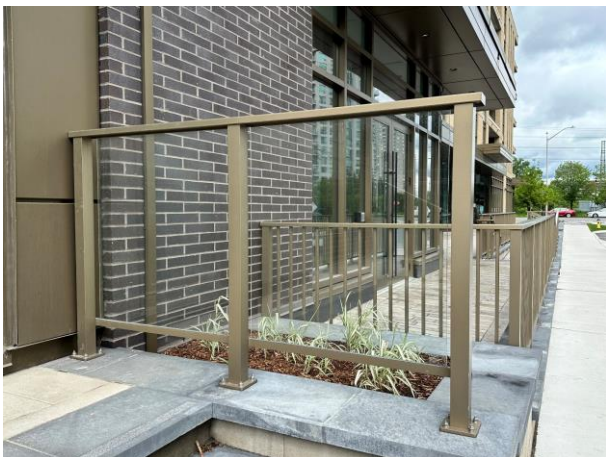
Wall Mount Railing



Dog Fence



Privacy Screen with Door



Top Mount Railing



Picket Railing for Entrance with Handrail



Railings and Wind Screens



Norman Street



Royal Mount



320 McRae



19 Centrepont



Riverain Phase 1



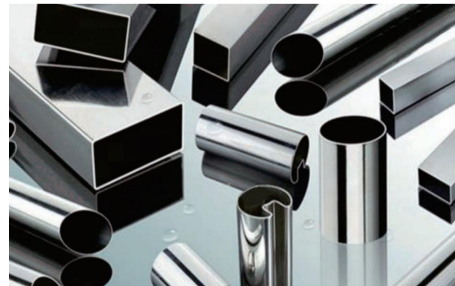
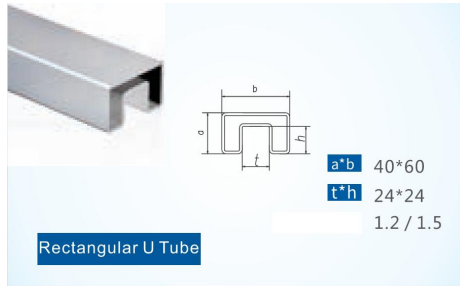
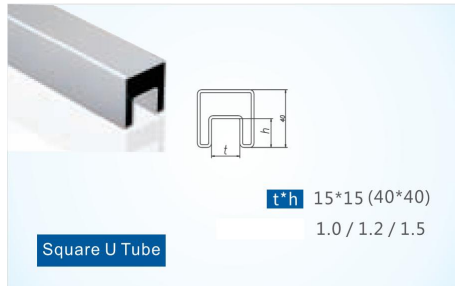
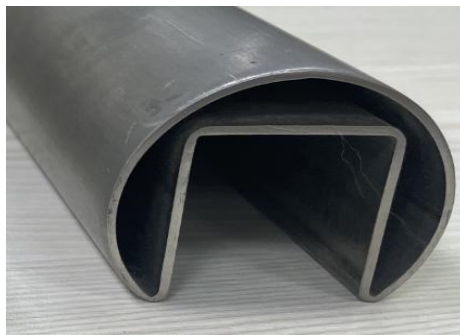
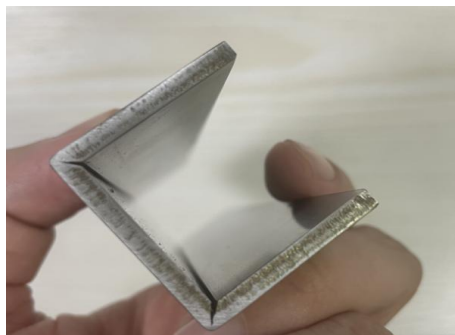
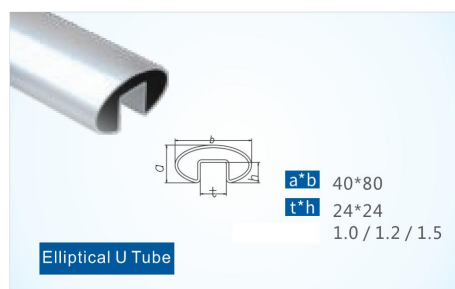
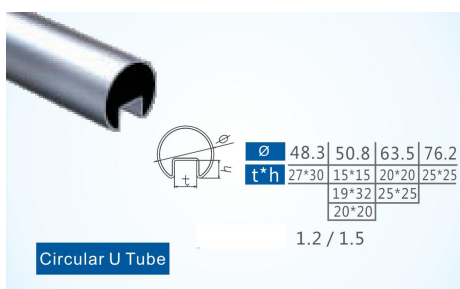
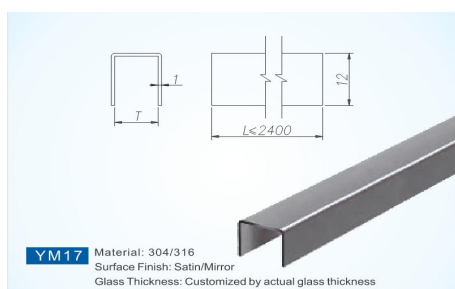
XChange



Base Shoe Railing

Aluminum Finish Available		Stainless Steel Finish Available		Tool for Glass Installation
PVDF	PPG, Valspar, Akzo, AXALTA	Satin		
Powder Coating	Akzo, Tiger	Brushed		
Anodize	Class 1/AA20 Black, Clear, Bronze	Mirror		

Top Cap Available



Curved Railings Available

