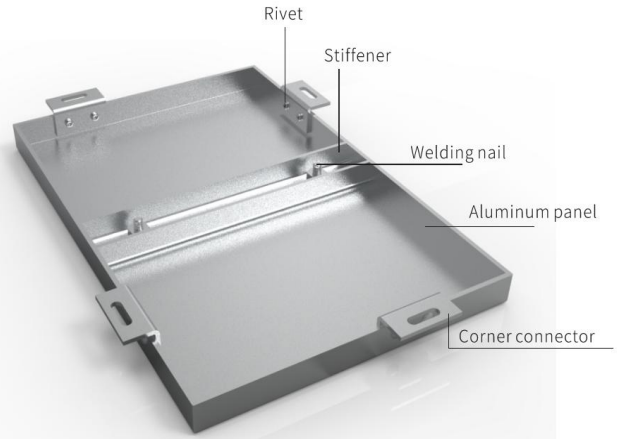




1. Aluminum Panel

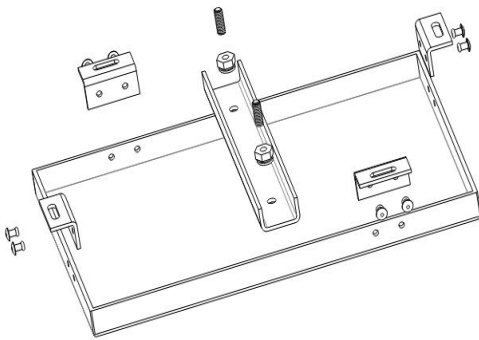
Aluminum panel is mainly composed of aluminum plate, reinforcement, corner connector, rivets, welding nails. The corner connector can be directly bent and stamped by the panel, or the corner connector profile can be riveted on the folding edge of the panel. Reinforcing bars are fixed on the back of the board through welding nails to enhance the strength and rigidity of the board surface and ensure the board flatness and seismic ability of surface in long - term use. If need sound insulation and warmth retention, sound insulation materials can also be installed on the back.

It is suitable for exterior wall and interior wall decoration of buildings, such as airport station, hospital, gymnasium, residential building, conference hall, opera house and other styles of large buildings and their suspended ceiling, beams and columns.

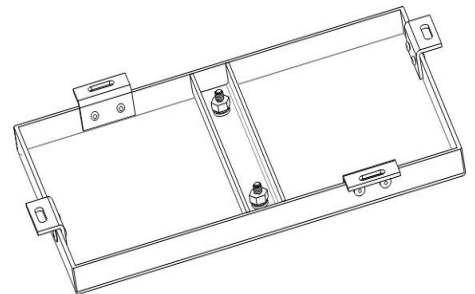


Aluminum panel common materials are 1100 and 3003 series, common specifications are between 2.0 and 3.0mm.

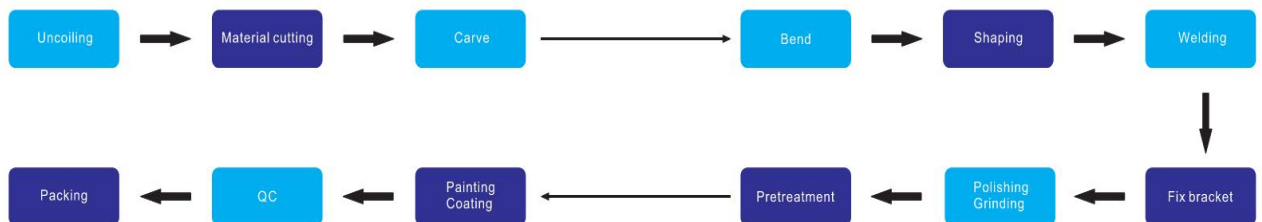
Process Flow



Aluminum panel exploded view



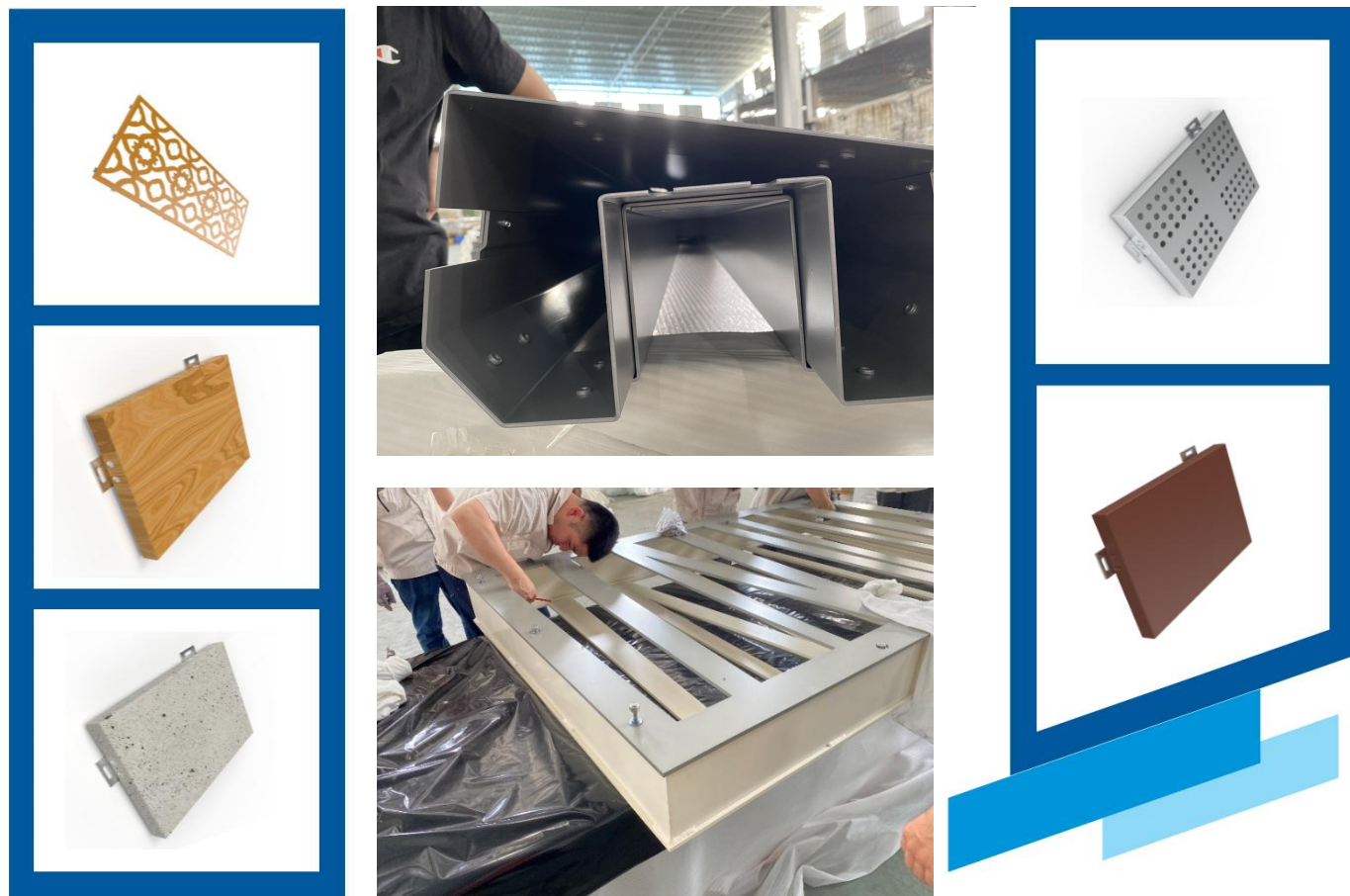
Aluminum panel assembly drawing





Miscellaneous Wall Claddings

Aluminum Panels Supplied



Options for Aluminum Panels

Thickness	Alloy	Finish
1mm~16mm, Typically 3mm & 4mm	1100, 3003, 5005, 5052, 6063, 6061 Typically 3003 & 5005 (ASTM B209)	Mill, Powder Coating, PVDF, Anodize (AAMA 2603, 2604, 2605, AAMA 611)

Price for Typical Composition (3003 Alloy)

3mm Mill finish flat panel (1220*2440mm)	3mm thickness, Powder Coating AAMA 2604	3mm thickness, PVDF AAMA 2605	4mm thickness, PVDF AAMA 2605
US\$ 51.68/m ²	US\$ 88.27/m ²	US\$ 94.23/m ²	US\$ 105.77/m ²

Note: Price is for reference only, formal price sheet will be offered upon project requirements.



2. Stainless Steel Panel

Decorative sheet metal parts are used in the field of rail transit and indoor fine decoration. They are processed and customized from stainless steel plates, with various shapes, including lines and unit plates.

- ▶ Material: 304/316L
- ▶ Surface treatment: hairline/wild grain /mirror/sandblasting/electroplating/anti-fingerprint
- ▶ The expansion width of sheet metal cannot exceed 1500mm, and the length cannot exceed 3000mm.
- ▶ The product can be customized according to project requirements



Effect Figure 1



Effect Figure 2



Effect Figure 3



Effect Figure 4



Miscellaneous Wall Claddings

Stainless Steel Panels Supplied



Screen



Package column



Screen



Package column



Overhead crane



Overhead crane



Screen



Decorative cover plate



Exterior wall decoration



Miscellaneous Wall Claddings

Stainless Steel Panels Supplied

Options for Stainless Steel Panels		
Thickness	Alloy	Finish
1mm~25mm, Typically 1.5mm & 2mm & 3mm for Decorative, 6mm, 8mm, 10mm, 12mm, 16mm, 20mm for structure	304, 316L/316, 410, Typically 304 and 316L for Plate (ASTM A240)	2B, Brushed, Satin, Non-directional Polish, Powder Coating, PVDF, Electroplate

Price for Typical Panels (304 Alloy)			
3mm thickness, 8K Mirror Finish	3mm thickness, 10K Mirror Finish	3mm thickness, Satin Finish	1.5mm thickness, Satin Finish
US\$ 202.69/m ²	US\$ 214.63/m ²	US\$ 190.55/m ²	US\$ 105.28/m ²

Price for Typical Panels (316 Alloy)			
3mm thickness, 8K Mirror Finish	3mm thickness, 10K Mirror Finish	3mm thickness, Satin Finish	1.5mm thickness, Satin Finish
US\$ 283.77/m ²	US\$ 300.48/m ²	US\$ 266.77/m ²	US\$ 147.39/m ²

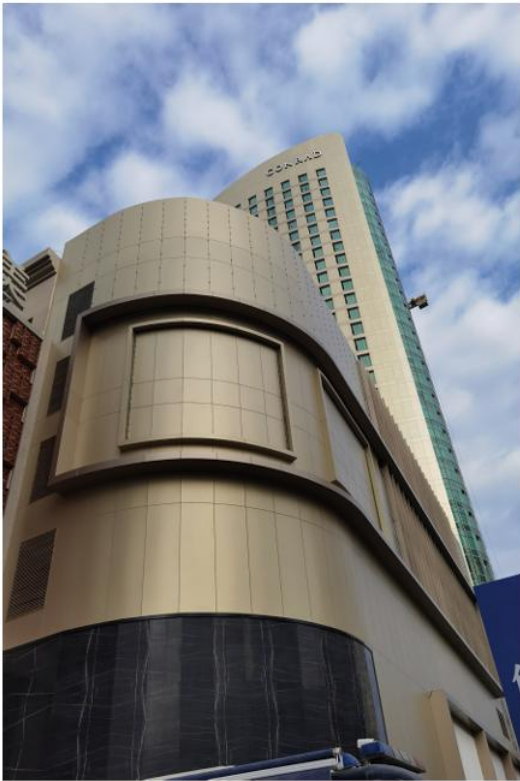
Note: Price is for reference only, formal price sheet will be offered upon project requirements.



Miscellaneous Wall Claddings

3. Aluminum Composite Panels

Product Display:



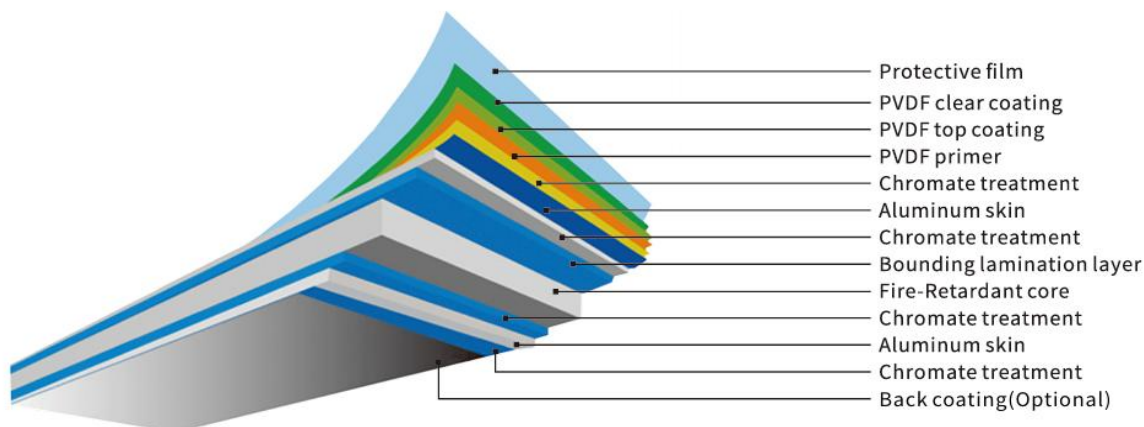
Certificate:

The product quality has passed the following environmental protection certification
Product quality has reached the international advanced level

Test Specification	Results
EN 13501-1 2017	Passed A2 fireproof level test
AS 1530.1-1994	Not defined as combustible material
NFPA 285	Passed
ASTM E84	Flame Spread Index 0 Smoke Developed Index 10
ASTM D1929	Flash Ignition Temperature(FIT): 463°C Spontaneous Ignition Temperature(SIT):463°C
BS 476	Class One Surface Spread of Flame



Aluminum Composite Panels Supplied



Product Specification:

A2 fireproof aluminum composite material is a decorative material that uses non-combustible inorganic materials as the core layer and metal skins on both sides as decorative surfaces. It is formed and compounded through special processes and can be widely used in building curtain walls, medical facilities, rail transit hubs, large public buildings, etc.

Product Specification		
Product Thickness	Product Width	Product Length
3-6(mm) 1/8"-1/4"	1000-2000(mm) 3' 3" - 6' 6"	2000-8000(mm) 6' 6"-26' 2"

Note: Thickness/width/length can be customized

Product Performance:

Test Specification	Item	Unit	Results
	Panel weight	Kg/m ²	8.2
ASTM C518-2010	Thermal conductivity	Wm.k	0.31
ASTM D790-2010	Flexural properties	Mpa	MOR:111 MOE 6586
ASTM E8-2011	Tensile strength	Mpa	51.9
ASTM D903	Bond strength	N/mm	7
ASTM E831-2012	Linear thermal expansion	um (/m.°C)	20.7
ASTM E413-2010	Sound transmission loss	dB	STC=26

Note: Test based on 4MM standard size



Miscellaneous Wall Claddings

Aluminum Composite Panels Supplied

Options for Aluminum Composite Panels

Dimensions	Class	Finish
Total 3mm~6mm; Aluminum plate thickness 0.3mm, 0.4mm, 0.5mm; (Face plate can be titanium alloy, stainless steel) Available width 1220mm, 1500mm, 2000mm Available Length 2440mm, Other dimensions can be customized	A2, A1, B2, B1, FR Fire proof, Typically A2	PVDF, Powder Coating, Anodized (MOQ 600 m ² per color for PVDF)

Price for Typical Flat Sheet (Typical Size 1220mm *2440mm)

4mm thickness, both sides 0.5mm thickness aluminum plate painted with PVDF (Fire rated A2)	4mm thickness, both sides 0.3mm thickness 316 stainless steel with 8K finish (Fire rated A2)	4mm thickness, both sides 0.5mm thickness aluminum plate painted with PVDF (Fire rated FR)	4mm thickness, exterior side 0.5mm thickness titanium zinc alloy (Fire rated A2)
US\$ 48.00/m ²	US\$ 148.08/m ²	US\$ 40.00/m ²	US\$ 140.00/m ²

Price for Typical Fabrication and Packing

Cut to size and groove	Bending and add clips	Packing	Unit price
US\$ 10.00/m ²	US\$ 13.84/m ²	US\$ 6.46/m ²	Material cost/usage rate + Fabrication and Packing cost

Note: Price is for reference only, formal price sheet will be offered upon project requirements.