



## Miscellaneous Products for Curtain Wall

### 1. Cassette Panel

- ◆ This panel was designed to work as part of the canopy, engraved from 10mm thickness 6061-T6 aluminum plates. Welded to aluminum extrusion frames and assembled as a cassette unit which can be attached to steel structure through bolts.



### Standard Construction

Bottom Plate	10mm thickness 6061-T6 aluminum plate Painted in PVDF (Nature Wicker)
Top Plate	10mm thickness 6061-T6 aluminum plate Painted in PVDF (Champagne Gold)
Frames	Extruded 6061-T6 at 4.5~7mm thickness, welded to bottom plate with ER4043 welding rod Painted in PVDF (Nature Wicker)
Connection	Top plate and bottom plate are locked together through ½"-13 bolt groups
Installation on site	Connect the cassette panel to structure through bolts at corners

### 2. Etched Brass Panel

- ◆ This 5mm thickness etched brass panel is designed for canopy ceiling. These panels were etched around 2mm depth to form the palms pattern. Brass extrusions were attached to the folded edges of the panels for connection to steel structure and also to form the 6mm gap without weather seal.

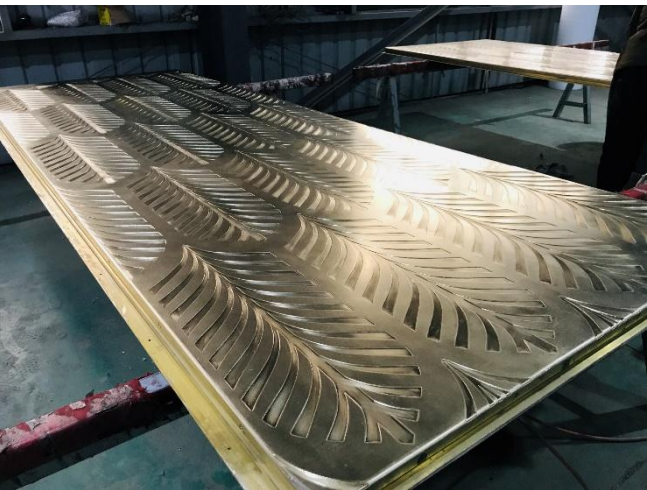




Miscellaneous Products for  
Curtain Wall

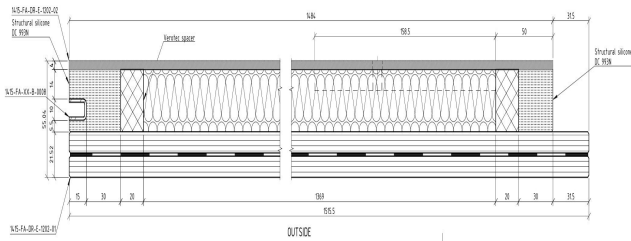
Standard Construction

Brass Plate	5mm thickness C28000
Panel Clips	C38500 copper extrusion attached with stainless steel screws to panel edges
Stiffener	C38500 C shape copper extrusion attached to panel back side with Lord MX-T6
Special Process	Etched palm pattern on brass plate Use Lord MX-T6 instead of welding studs to avoid welding mark which is visible from exterior
Finish	Non-directional polish Patina



3. Aluminum Glass Panels

- ◆ This is designed for spandrel area of the glass wall, face panel is a laminated glass with full digital print on #2 surface, back panel is anodized aluminum panel. Stainless steel C channel is buried inside vertical structural silicone for easy connection to structure.



Standard Construction

Glass Panel	10mm low iron HS+1.52 SGP+ 10mm low iron HS, full area digital print on #2 surface
Back Plate	3mm thickness 5005-H14 clear anodized aluminum panel, AA15
Spacer	Verotec spacer
Infill	Rockwool S60 series at 75mm thickness
U Channel	1.5mm thickness, S.S. 316L
Silicone	Dow 993N

